

# APPLICATION & DESIGN FEATURES

## Value-

Classical open-type part with leads and channel bracket for mounting is the simplest form of MCE Miniature Line package options and subsequently the lowest in price.

## Reliability -

Internally anchored leads resist mechanical stresses. Temperature rating is 130°C.

## Flexibility -

Leads permit direct connection to external circuitry where desired. Open-type construction allows part and associated components to be cast and impregnated in one container.

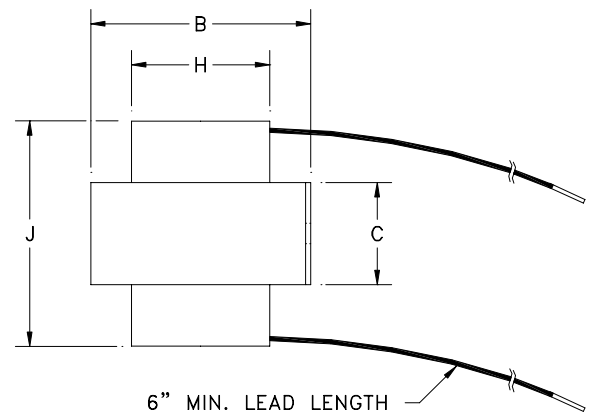
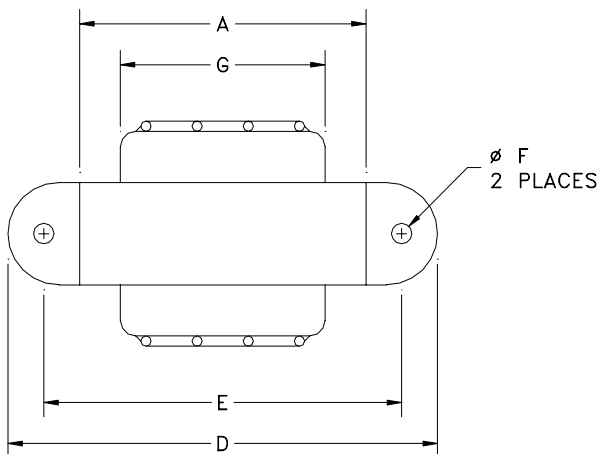
## Attractive Appearance-


The clear non-yellowing moisture resistant coating brings out the natural colors of quality materials used.

# MECHANICAL SPECIFICATIONS

The mechanical data shown applies to all MCE Standard Miniature parts offered in the OB package. For lead location and color coding of a specific part, see appropriate electrical application series Product Bulletin (e.g., FL, RT, etc.).

FRAME SIZE	WT. LBS.	MAX. OUTSIDE DIM.				MOUNTING DIM.		MAX. COIL DIM.		
		A	B	C	D	E ± .03	F ± .02	G	H	J
25	.078	1.10	.86	.40	1.68	1.38	.12	.79	.54	1.00
37	.16	1.37	1.20	.57	2.24	1.84	.18	.89	.71	1.15
50	.35	1.76	1.46	.70	2.43	2.00	.18	1.13	.87	1.43
62	.55	2.02	1.74	.84	2.88	2.39	.18	1.26	.99	1.57
75	.96	2.38	2.04	.96	3.30	2.81	.18	1.52	1.19	1.82
87	1.8	2.76	2.35	1.09	3.75	3.12	.18	1.77	1.38	2.10
100	2.3	3.15	2.68	1.23	4.06	3.56	.18	2.03	1.57	2.35



	INIT.	DATE	CAGE CODE 09349	<b>MAGNETIC CIRCUIT ELEMENTS INC.</b> 		
PROD.	MAP	12-21-05				
ENG.	JC	12-21-05	MINIATURE LINE PACKAGING BULLETIN			
Q.A.	BT	12-21-05	DECIMALS (IN.) .XX = ± .03 .XXX = ± .010	DESCRIPTION	SIZE	DWG. NO.
REV.	D	12-21-05		OPEN TYPE PARTS	A	<b>OB</b>