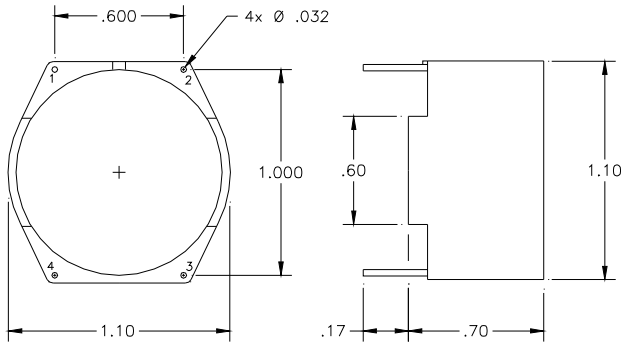


ELECTRICAL SPECIFICATIONS

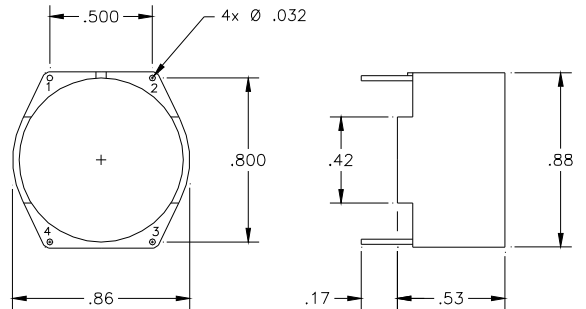
PART NUMBER	L - MILLI H - MIN EA. WNDG.	DCR - OHMS ±15% EA. WNDG.	AMPS MAX	LEAKAGE MICRO H - TYP	SELF RES. kHz - TYP
EM38JL20	.52	.009	9.5	3.6	1400
EM38JL21	.80	.014	7.5	5.7	1300
EM38JL22	1.40	.022	6.0	9.0	1100
EM38JL23	2.10	.034	4.8	13	910
EM18JL23	2.25	.039	3.6	8.0	830
EM18JL24	3.89	.064	2.8	12	570
EM18JL25	6.43	.11	2.1	21	390
EM18JL26	10.2	.17	1.7	33	300
EM18JL27	15.6	.26	1.4	51	240
EM18JL28	24.8	.41	1.1	78	180
EM18JL29	39.6	.65	.88	130	160
EM18JL30	62.2	1.0	.71	200	120
EM18JL31	99.1	1.6	.56	310	95
EM18JL32	158	2.5	.45	490	77

MECHANICAL SPECIFICATIONS

EM38



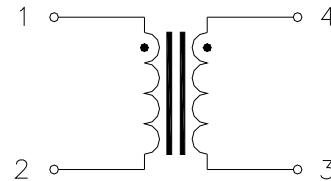
EM18



NOTES

1. Inductance is measured at 100 mVRMS, 1 kHz.
2. Typical nominal inductance is 20% higher than the L MIN.
3. Self Resonant Frequency is for one winding only.
4. Maximum Amps rating (AC or DC) is for a 50°C rise.
5. Dielectric Withstanding Voltage is 1500 VDC, 15 µA MAX leakage from winding-to-winding.
6. Impedance vs. Frequency data available upon request.
7. Designed to meet MIL-PRF-27 Grade 5, Class S (130° C).
8. Pins are hot solder dipped.

SCHEMATIC DIAGRAM



	INIT.	DATE	CAGE 09349	MAGNETIC CIRCUIT ELEMENTS INC. www.MCEmagnetics.com, ph. 831-757-8752, fax 831-757-5478				
PROD.	JAP	3-30-10						
ENG.	JC	3-30-10	COMMON MODE CHOKES - FERRITE					
Q.A.	BZ	3-30-10						TEST CONDITION 20° ± 5° C
REV.	C	3-30-10						