

APPLICATION FEATURES

- Reliability** - Simple circuit.
Designed to meet MIL-PRF-27 Grade 5, Class S (130°C)
- Low Harmonics** - The sine wave is generated directly instead of square wave with load sensitive filters. Subsequently, low noise in DC line and low EMI.
- Self Switching** - Minimizes transistor losses.
- Flexibility** - Through-holes permit terminal side to be mounted against or opposite mounting surfaces.

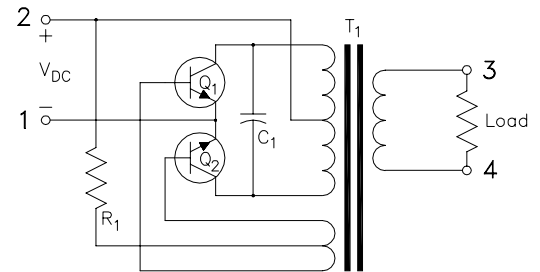


ELECTRICAL SPECIFICATIONS

P/N	INPUT		OUTPUT		
	V _{DC}	mADC	V _{RMS}	mA _{RMS}	Hz
EA75SW86	28	480	115*	75	400

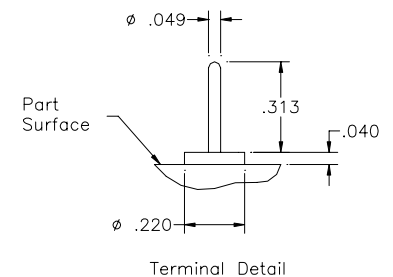
*Unregulated

SCHEMATIC



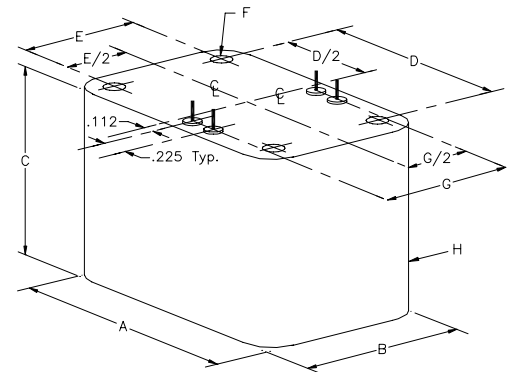
DESIGN FEATURES

1. Terminals are precision located for use with printed circuit boards.
2. Encapsulation cup is high-temperature glass-filled for physical stability.
3. Epoxy encapsulation material is resistant to thermal and mechanical stress.



MECHANICAL SPECIFICATIONS

CASE SIZE	WT. LBS.	OUTSIDE DIMENSIONS			MOUNTING DIM.			HOLE DIA.	TERM. DIM.	CASE RAD.
		A MAX	B MAX	C MAX	D ±.015	E ±.015	F ±.010	G ±.015	H (REF.)	
75	.93	2.60	1.98	1.83	2.000	1.438	.185	1.562	.25	



NOTES

1. Other voltages available as modified standard parts. Contact an MCE Application Engineer for further information.
2. If the terminals are inserted into a PC board and bolted, 0.040 inch thick washers are available to level the part with the terminal shoulder. Add a 'W' to the end of of the part number to include the washers as a separate item in the shipment.

INIT.		DATE		TOLERANCES		MAGNETIC CIRCUIT ELEMENTS INC.			
PROD.				DECIMALS (IN.)					
ENG.				.XX = ± 0.03		8.6 W, 115 V_{RMS}, 400 Hz SINE WAVE INVERTER			
Q.A.				.XXX = ± 0.010					
REV.				ANGLE = ±0.5°		DESCRIPTION ENCAPSULATED TYPE PARTS		SIZE A	
				CAGE 09349					