

APPLICATION FEATURES

Reliability -

Designed to meet MIL-PRF-27 Grade 5, Class S (130°C).

High Density Package-

Molded plastic cup designed to fit standard core sizes.

Flexibility -

Through-holes permit terminal side to be mounted against or opposite mounting surfaces.

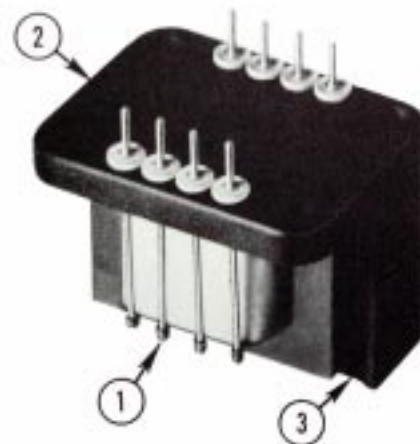
Attractive Appearance-

Teflon-collar terminals adds aesthetic qualities to assemblies.



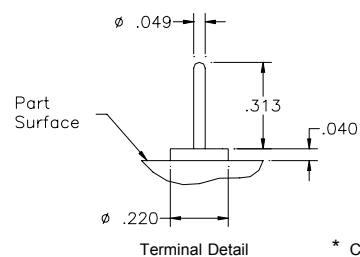
DESIGN FEATURES

1. Extended solid-pin terminals. This unique MCE design feature provides multiple values:
 - a. Susceptibility of internal solder joint to heating at time of external connection is minimized due to the long distance the heat must travel.
 - b. Unit contains only one solder connection per terminal instead of the conventional two for improved reliability.
 - c. Manufacturing method positions coil leads adjacent to terminals thus minimizing length of coil lead in plastic and eliminates need for flex leads.
 - d. Coil lead is mechanically wrapped around terminal and solder connection is exposed during assembly for inspection.
 - e. Terminals are precision located for use in printed circuit boards.
2. Encapsulation cup is high-temperature glass-filled for physical stability.
3. Epoxy encapsulation material is resistant to thermal and mechanical stress.



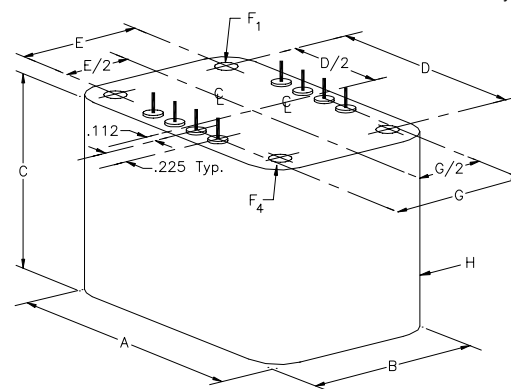
MECHANICAL SPECIFICATIONS


The mechanical data shown applies to all MCE Standard Miniature parts offered in the EA package. For terminal location of a specific part, see appropriate electrical application series Product Bulletin. (e.g., FL, RT, etc.)



* Case No. 25 & 37 have F1 & F4 Mount Holes only.

CASE SIZE	WT. LBS.	OUTSIDE DIMENSIONS			MOUNTING DIM.		HOLE DIA.	TERM. DIM.		CASE RAD.
		A MAX	B MAX	C MAX	D ±.015	E ±.015	F ±.010	G ±.015	H (REF)	
25	.15	1.37	1.19	.97	1.000	.828	.157*	.812	.16	
37	.26	1.63	1.35	1.31	1.157	.875	.185*	.953	.21	
50	.51	1.98	1.60	1.59	1.500	1.125	.185	1.203	.21	
62	.78	2.20	1.73	1.84	1.688	1.250	.185	1.313	.21	
75	1.3	2.60	1.98	2.15	2.000	1.438	.185	1.562	.25	
87	2.1	3.03	2.24	2.47	2.438	1.625	.212	1.828	.26	
100	2.8	3.38	2.47	2.84	2.688	1.750	.212	2.062	.31	



	INIT.	DATE	CAGE 09349	MAGNETIC CIRCUIT ELEMENTS INC. 		
PROD.	JAP	11-1-06				
ENG.	JC	11-1-06	MINIATURE LINE PACKAGING BULLETIN			
Q.A.	BT	11-1-06	DECIMALS (IN.) .XX = ± .03 .XXX = ± .010	DESCRIPTION	SIZE	DWG. NO.
REV.	C	11-1-06		ENCAPSULATED TYPE PARTS	A	EA