

APPLICATION FEATURES

Reliability -

Superior heat dissipation. Direct contact of core and case affords minimum thermal resistance to the mounting. Designed to meet MIL-PRF-27 Grade 4, Class S (130°C).

High Density Package-

Outside can dimensions only slightly larger than core and coil.

Flexibility -

Four selections of mounting and terminal location combinations available:

- Package Type CA - Studs with terminals on same surface.
 CB - Inserts with terminals on same surface.
 CC - Studs with terminals on opposite surface.
 CD - Inserts with terminals on opposite surface.



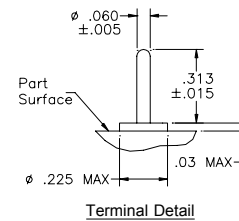
DESIGN FEATURES

- STRAIGHT SINGLE-PIN TERMINALS.** This design feature provides multiple values:
 - Terminals are precision located for use in printed circuit boards.
 - Unit contains only one solder connection per terminal instead of the conventional two for improved reliability.
 - Manufacturing method positions coil leads adjacent to terminals thus minimizing length of coil lead in plastic and eliminates need for flex leads.
 - Coil lead is mechanically wrapped around terminal and solder connection is exposed during assembly for inspection.
- THREE-PIECE CAN.** Provides improved accessibility for assembly and potting. Material is cold-rolled steel, copper and tin plated for extra corrosion resistance. Component is hermetically sealed.



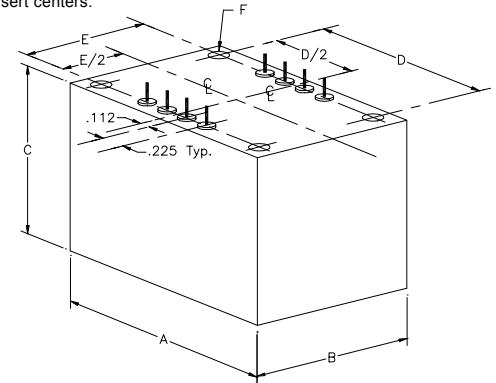
MECHANICAL SPECIFICATIONS


The mechanical data shown applies to all MCE Standard Miniature parts offered in the CA, CB, CC, and CD package. For terminal location of a specific part, see appropriate electrical application series Product Bulletin. (e.g., FL, RT, etc.)



CASE SIZE	WT. LBS.	OUTSIDE DIMENSIONS			MOUNTING DIM.		THREAD
		A MAX	B MAX	C MAX	D ±.015	E ±.015	
25	.16	1.25	1.25	1.00	.875	.875	4-40
37	.30	1.50	1.38	1.31	1.125	1.000	6-32
50	.52	1.88	1.50	1.56	1.500	1.125	6-32
62	.83	2.13	1.75	1.81	1.750	1.375	6-32
75	1.3	2.50	2.00	2.13	2.125	1.625	6-32
87	1.9	2.88	2.25	2.44	2.500	1.875	8-32
100	2.8	3.25	2.50	2.75	2.875	2.125	8-32

Terminals are in line with stud / insert centers.
 Studs - .375 ±.062 long.
 Inserts - 8 Full threads MIN.



	INIT.	DATE	CAGE 09349	MAGNETIC CIRCUIT ELEMENTS INC. 		
PROD.	JP	11-1-06				
ENG.	JC	11-1-06	MINIATURE LINE PACKAGING BULLETIN			
Q.A.	BT	11-1-06	DECIMALS (IN.) .XX = ± .03 .XXX = ± .010	DESCRIPTION	SIZE	DWG. NO.
REV.	B	11-1-06		CANNED TYPE PARTS	A	CA